



IWS Overview



The Mutualink IWS provides an incident-based highly intuitive graphical user interface (GUI) used by a dispatcher or incident manager to communicate with other dispatch personnel and units in the field.



Schedule
Contract GS-35F-0006W

NJ State Contract #83894
NY State Umbrella Contract #PM67324 - Lot 3
NY State Security Systems & Solutions, Contract #PT66827
CT State Contract #14PSX0178



Mutualink IWS

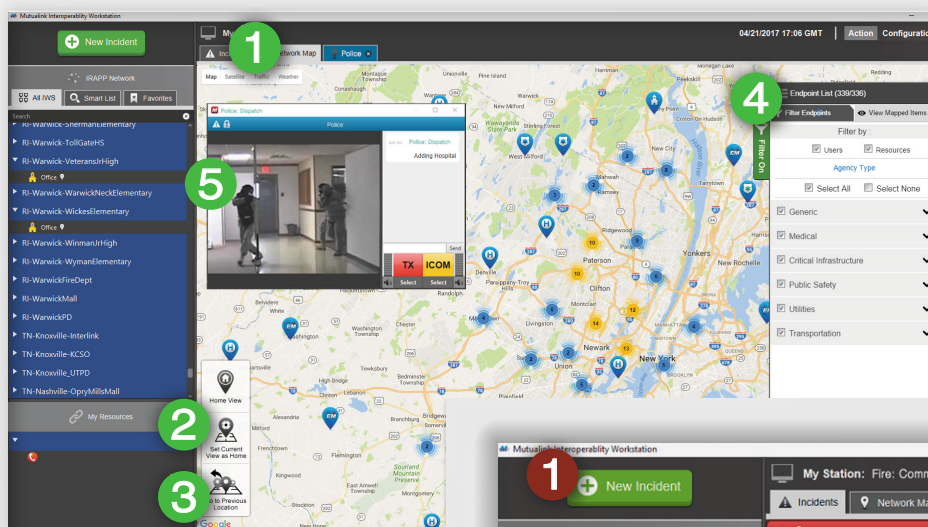
Interconnection of radio channels/talkgroups, video and telephone resources is facilitated using Mutualink's drag and drop interface. An IWS can be used as a stand-alone mini-console, in combination with an existing console position, or as a download for Windows®, OS X®, iOS® or Android™ devices. The IWS is simple to use and easy to maintain. The robust, multi-featured Mutualink software is easy for administrators to manage. The IWS is the primary operational user interface for the Mutualink interoperability system.



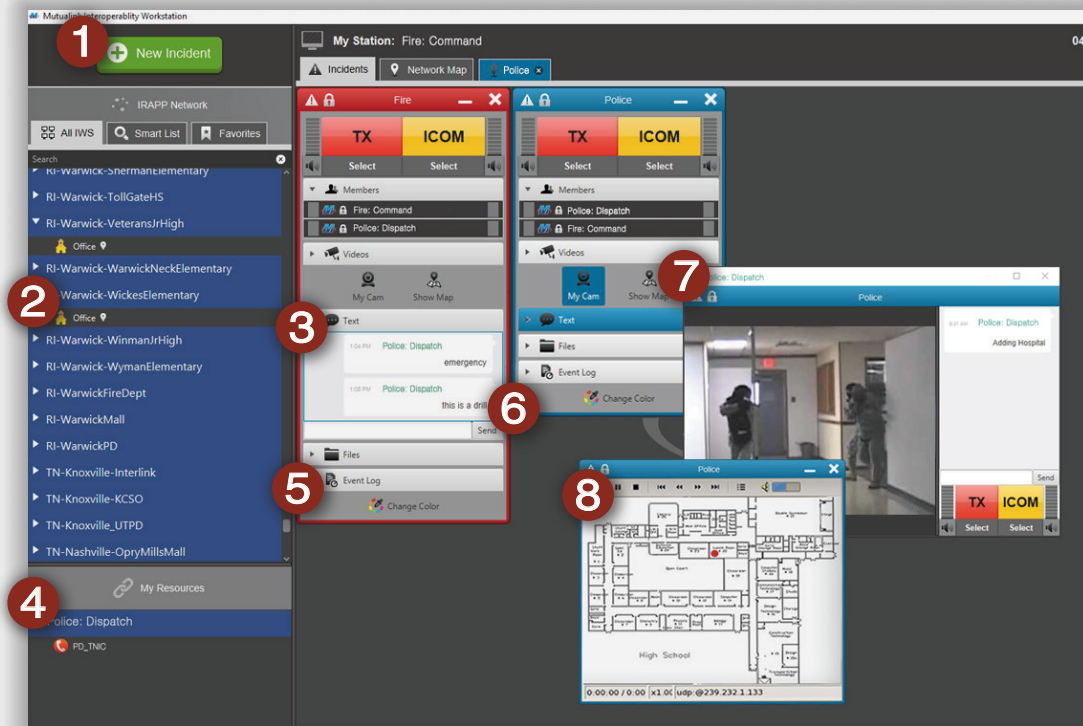
	IWS Appliance	Edge IWS
Sophisticated, World-Class Interface	✓	✓
Drag-and-drop Gesture	✓	✓
Auto-discover Agency Directory	✓	✓
Central Health Monitoring	✓	✓
AES Encrypted	✓	✓
Dedicated Hardware	✓	
Operating System	SE Linux	Windows, OS X, iOS, Android
Local Resource Control	No Internet Connection Required	Requires Internet Connection

Graphic User Interface (GUI)

- Displays available partners and agency resources and active incidents
- Accommodates multiple incidents
- One video stream per incident is supported
- Real-time voice, video and data sharing
- End-to-End Encryption
- Locate and add partners using Network Map
- Monitor traffic and weather by activating layers on Network Map
- Manage incidents in Network Map view



1. map or satellite view | layer traffic and/or weather
2. set home view for easy navigation to your preferred map location
3. return to your last location
4. filter mapped endpoints
5. manage incidents on map tab



1. create incident
2. available partners
3. text messaging
4. drag & drop resources (phone, video, radio, etc.)
5. event log for AARs
6. active Incidents color-coded for quick visual recognition
7. video share
8. file share



View Satellite, Traffic or Weather or an Overlay of All



ANY media
device
network...
anytime

Mutualink, Inc.

Headquarters
1269 South Broad Street
Wallingford, CT 06492
(866) 957.5465

Research & Development Facilities

3 Lan Drive
Westford, MA 01886
(978) 392.0040

313 South Jupiter Road
Ste 110
Allen, TX 75002

Western Industrial Park
Rochelaise # 26 Bo. Guanajibo
Mayagüez, PR 00682



info@mutualink.net
www.mutualink.net