



## IWS Overview



IWS Appliances  
IWS Application  
Edge IWS

The Mutualink IWS provides an incident-based highly intuitive graphical user interface (GUI) used by a dispatcher or incident manager to communicate with other dispatch personnel and units in the field.



# Mutualink IWS

Interconnection of radio channels/talkgroups, video and telephone resources is facilitated using Mutualink's drag and drop interface. An IWS can be used as a stand-alone mini-console, in combination with an existing console position, or as a download for Windows®, OS X®, iOS® or Android™ devices. The IWS is simple to use and easy to maintain. The robust, multi-featured Mutualink software is easy for administrators to manage. The IWS is the primary operational user interface for the Mutualink interoperability system.



## Mutualink IWS Feature Overview

	IWS Appliance	IWS Application	Edge IWS	Edge IWS Web
Sophisticated, World-Class Interface	✓	✓	✓	✓
Drag-and-drop Gesture	✓	✓	✓	✓
Auto-discover Agency Directory	✓	✓	✓	✓
Central Health Monitoring	✓	✓	✓	✓
AES Encrypted	✓	✓	✓	✓
Dedicated Hardware	✓			
Operating System	SE Linux	Windows (local)	Windows, OS X, iOS, Android	Windows
Local Resource Control	No Internet Connection Required		Requires Internet Connection	

### Product Definitions

**IWS Appliance:** Linux-based device dedicated to Mutualink software

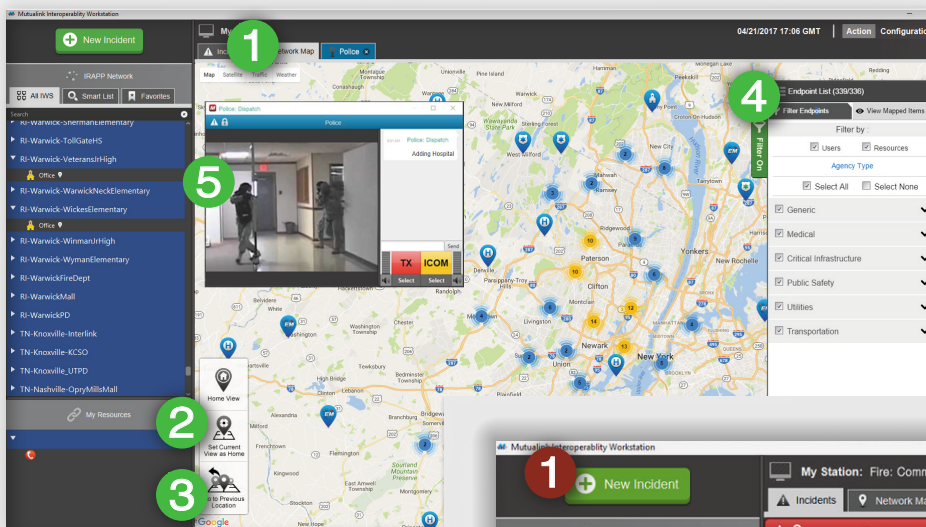
**IWS Application:** Thick client for Windows runs as a native application

**Edge IWS:** Thin clients for Windows, OS X, iOS or Android

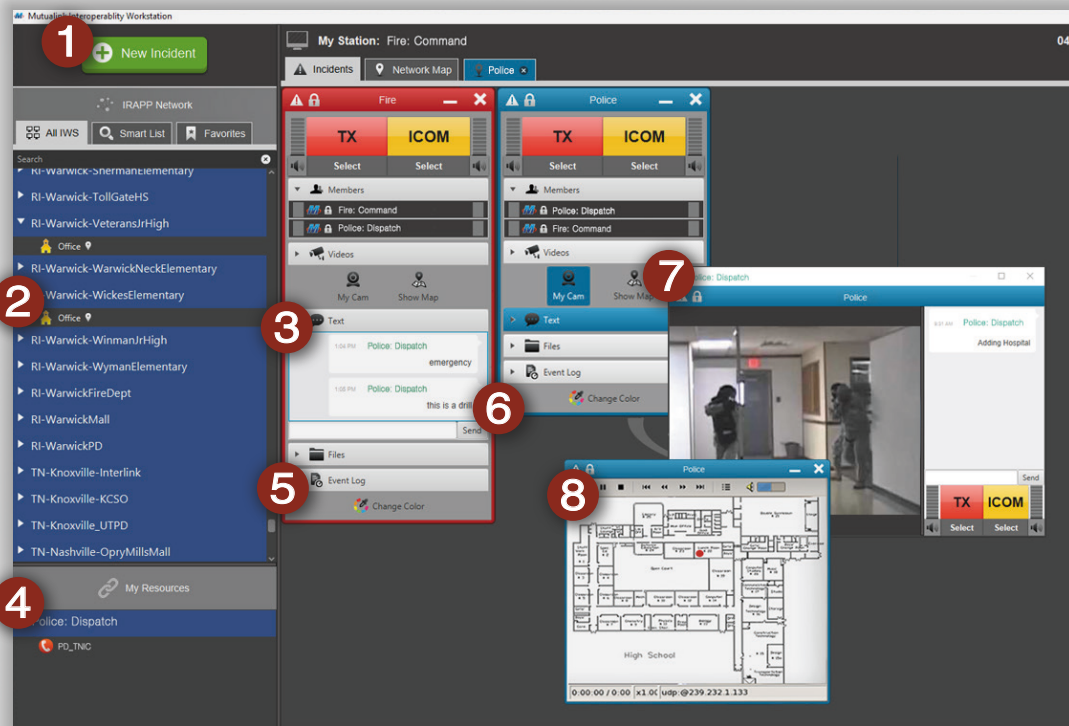
**Edge IWS Web:** Browser-based thin client designed for simplified customer access

# Graphic User Interface (GUI)

- Displays available partners and agency resources
- Up to eight incidents can be open simultaneously
- One video stream per incident is supported
- Real-time voice, video and data sharing
- End-to-End Encryption
- Locate and add partners using Network Map
- Monitor traffic and weather by activating layers on Network Map
- Manage incidents in Network Map view



1. map or satellite view | layer traffic and/or weather
2. set home view for easy navigation to your preferred map location
3. return to your last location
4. filter mapped endpoints
5. manage incidents on map tab



1. create incident
2. available partners
3. text messaging
4. drag & drop resources (phone, video, radio, etc.)
5. event log for AARs
6. active Incidents color-coded for quick visual recognition
7. video share
8. file share





# View Satellite, Traffic or Weather or an Overlay of All



**ANY** media  
device  
network...  
*anytime*

Mutualink, Inc.

**Headquarters**  
1269 South Broad Street  
Wallingford, CT 06492  
(866) 957.5465

**Research & Development Facilities**  
3 Lan Drive  
Westford, MA 01886  
(978) 392.0040

313 South Jupiter Road  
Ste 110  
Allen, TX 75002

Western Industrial Park  
Rochelaise # 26 Bo. Guanajibo  
Mayagüez, PR 00682



info@mutualink.net  
www.mutualink.net