



IWS Overview



IWS Appliances IWS Application Edge IWS

The Mutualink IWS provides an incident-based highly intuitive graphical user interface (GUI) used by a dispatcher or incident manager to communicate with other dispatch personnel and units in the field.



Mutualink IWS

Interconnection of radio channels/talkgroups, video and telephone resources is facilitated using Mutualink's drag and drop interface. An IWS can be used as a stand-alone mini-console, in combination with an existing console position, or as a download for Windows®, OS X®, iOS® or Android™ devices. The IWS is simple to use and easy to maintain. The robust, multi-featured Mutualink software is easy for administrators to manage. The IWS is the primary operational user interface for the Mutualink interoperability system.



Mutualink IWS Feature Overview

	IWS Appliance	IWS Application	Edge IWS	Edge IWS Web
Sophisticated, World-Class Interface	✓	✓	✓	✓
Drag-and-drop Gesture	✓	✓	✓	✓
Auto-discover Agency Directory	✓	✓	✓	✓
Central Health Monitoring	✓	✓	✓	✓
AES Encrypted	✓	✓	✓	✓
Dedicated Hardware	✓			
Operating System	SE Linux	Windows (local)	Windows, OS X, iOS, Android	Windows
Local Resource Control	No Internet Connection Required		Requires Internet Connection	

Product Definitions

IWS Appliance: Linux-based device dedicated to Mutualink software

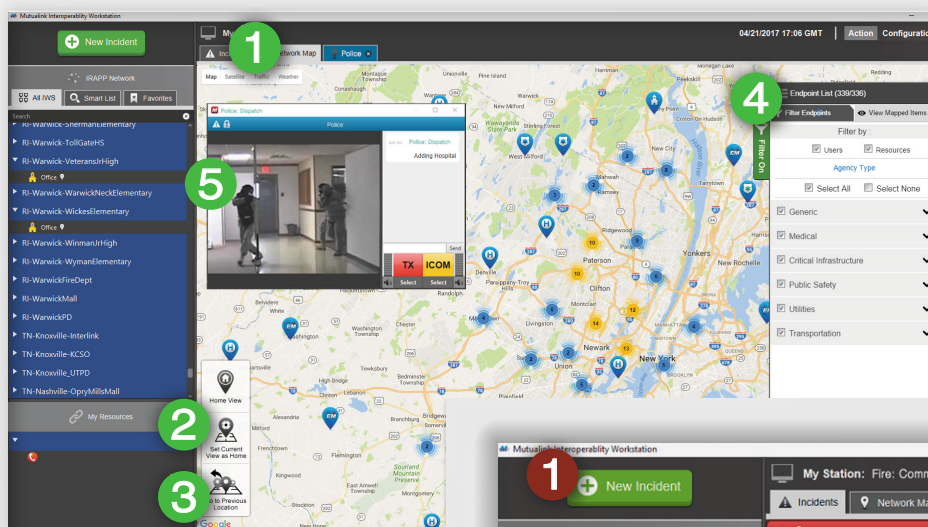
IWS Application: Thick client for Windows runs as a native application

Edge IWS: Thin clients for Windows, OS X, iOS or Android

Edge IWS Web: Browser-based thin client designed for simplified customer access

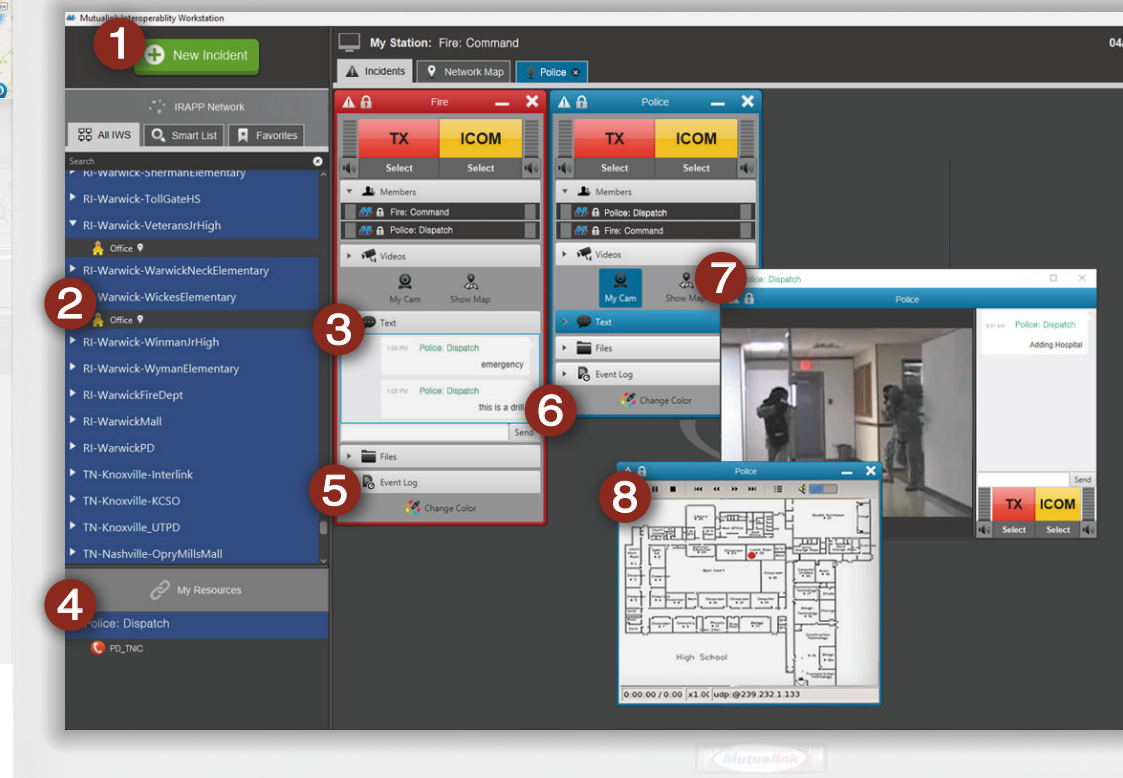
Graphic User Interface (GUI)

- Displays available partners and agency resources
- Up to eight incidents can be open simultaneously
- One video stream per incident is supported
- Real-time voice, video and data sharing
- End-to-End Encryption
- Locate and add partners using Network Map
- Monitor traffic and weather by activating layers on Network Map
- Manage incidents in Network Map view



1. map or satellite view | layer traffic and/or weather
2. set home view for easy navigation to your preferred map location
3. return to your last location
4. filter mapped endpoints
5. manage incidents on map tab

1. create incident
2. available partners
3. text messaging
4. drag & drop resources (phone, video, radio, etc.)
5. event log for AARs
6. active Incidents color-coded for quick visual recognition
7. video share
8. file share





View Satellite, Traffic or Weather or an Overlay of All



ANY media
device
network...
anytime

Mutualink, Inc.

Headquarters
1269 South Broad Street
Wallingford, CT 06492
(866) 957.5465

Research & Development Facilities

3 Lan Drive
Westford, MA 01886
(978) 392.0040

313 South Jupiter Road
Ste 110
Allen, TX 75002

Western Industrial Park
Rochelaise # 26 Bo. Guanajibo
Mayagüez, PR 00682



info@mutualink.net
www.mutualink.net